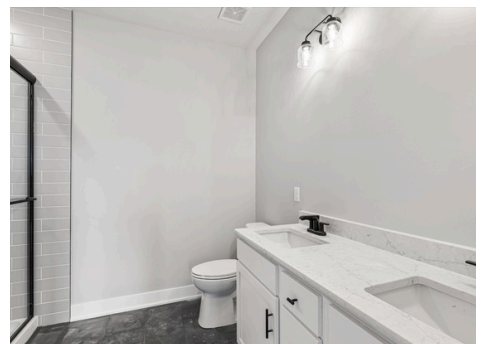


THE MULLEN I

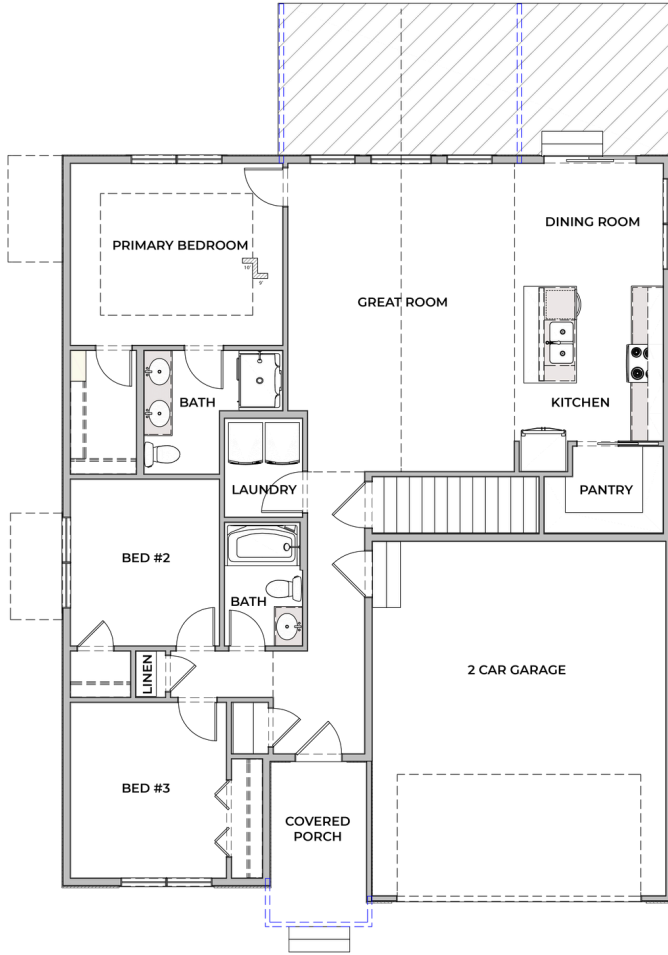
3 BED | 2 BATH | 2 CAR | 2,406 SQ FT

Build this plan starting at \$365,000



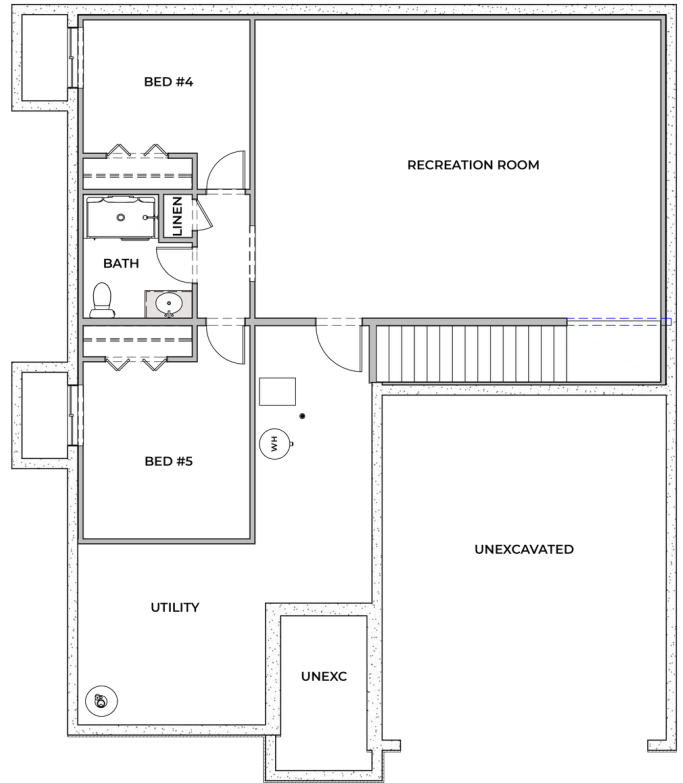
402.281.9115
www.thibuilders.com

**BUILT FOR LIVING,
DESIGNED TO LAST.**



MAIN FLOOR

Artist rendering may vary from plan. Prices, elevations and floor plans may be subject to change. See sales associate for details.



BASEMENT OPTION 4

Finished basement options to be selected at price out.

FLOOR PLAN FEATURES & HIGHLIGHTS

- 8" thick, 9' tall foundation walls
- Spray-foamed rim joists (superior energy seal)
- Marvin windows & doors (premium performance)
- James Hardie fiber-cement siding (no vinyl here)
- Insulated, finished garage with double-sided steel doors + both openers
- Tankless water heater for efficiency & endless hot water
- Sump pump WITH alarm
- Large walk-in pantry
- Spacious living room
- Main-floor laundry
- Soft-close cabinetry
- Quartz countertops
- High-quality, durable LVP
- GE Stainless-steel appliances included + refrigerator

OPTIONAL FEATURES

Contact our sales representative to learn more about optional features and upgrades available for this floor plan.