



## Mullen I

Ranch style home | 1,420 SQ.FT.  
3 bedrooms | 2 bathrooms

**Finished Basement Adds**   
1 bedrooms | 1 bathroom | 819 SQ.FT.

## Standard Features

- LVP flooring throughout main floor.
- Fans & overhead lighting in all bedrooms and living room.
- Quartz countertops in kitchen & in bathrooms.
- Rough-ins included in unfinished basement.
- Tankless water heater.
- Stainless Steel GE Appliances



Prices, elevations, and floor plans may be subject to change, see sales associate for details. 01/2025



# Mullen I

## Floor Plan

### What Sets Us Apart from Other Home Builders?

We strive to build the trust of our clients through collaborative decision-making, quality results, and the recognition of issues that are most important to clients.

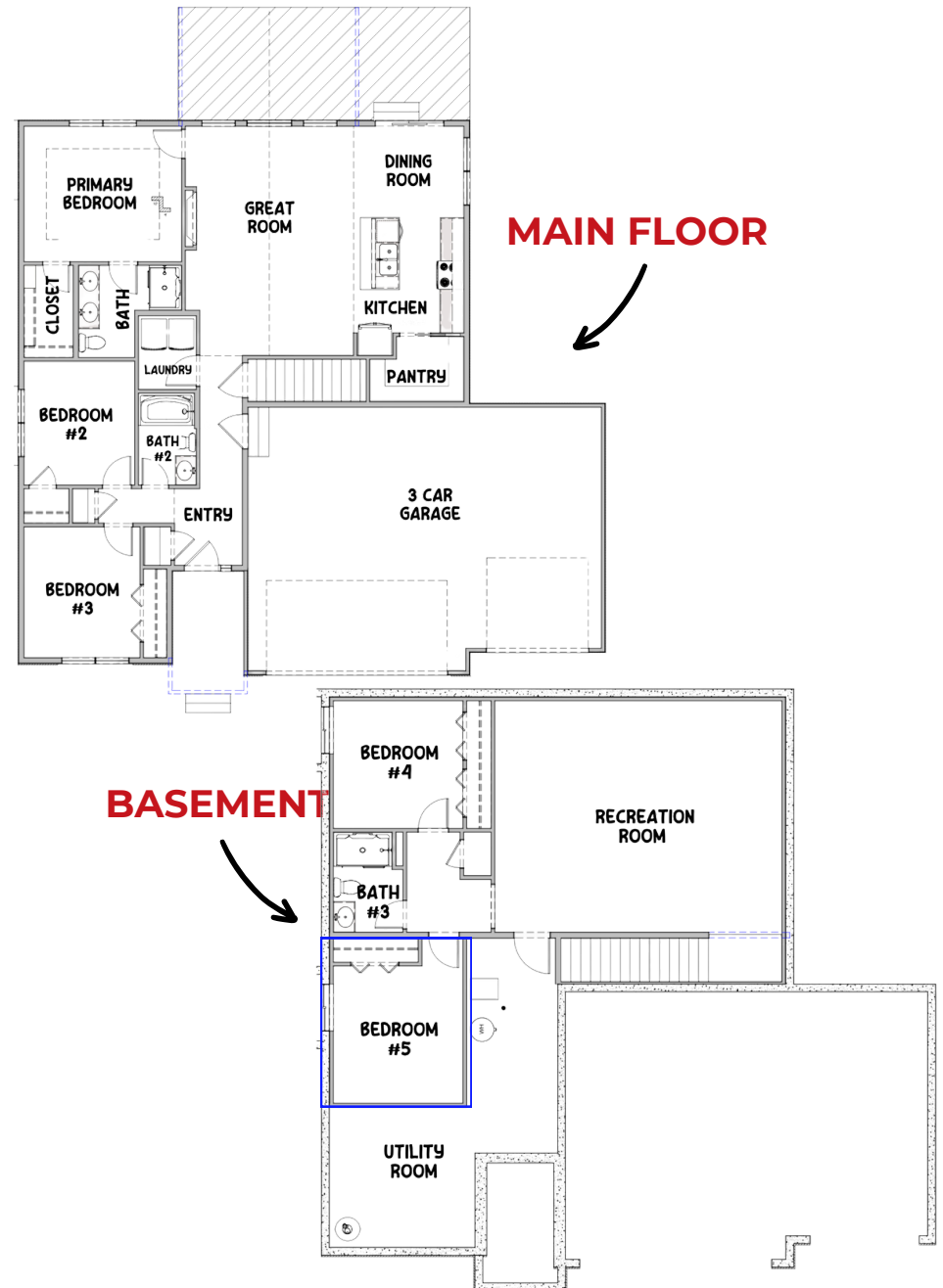
Known for being the highest value provider of construction services locally.

- Recognized for developing and embracing emerging technologies and processes.
- Offering a more diversified set of innovative services.
- Serving a broader geographic market
- Responsive to the needs of our clients, our employees, and our communities

### Average Cost of Design Consultation Upgrades

# \$10,000 - \$15,000

Artist rendering may vary from plan. prices, elevations, and floor plans may be subject to change, see sales associate for details. 01/2025





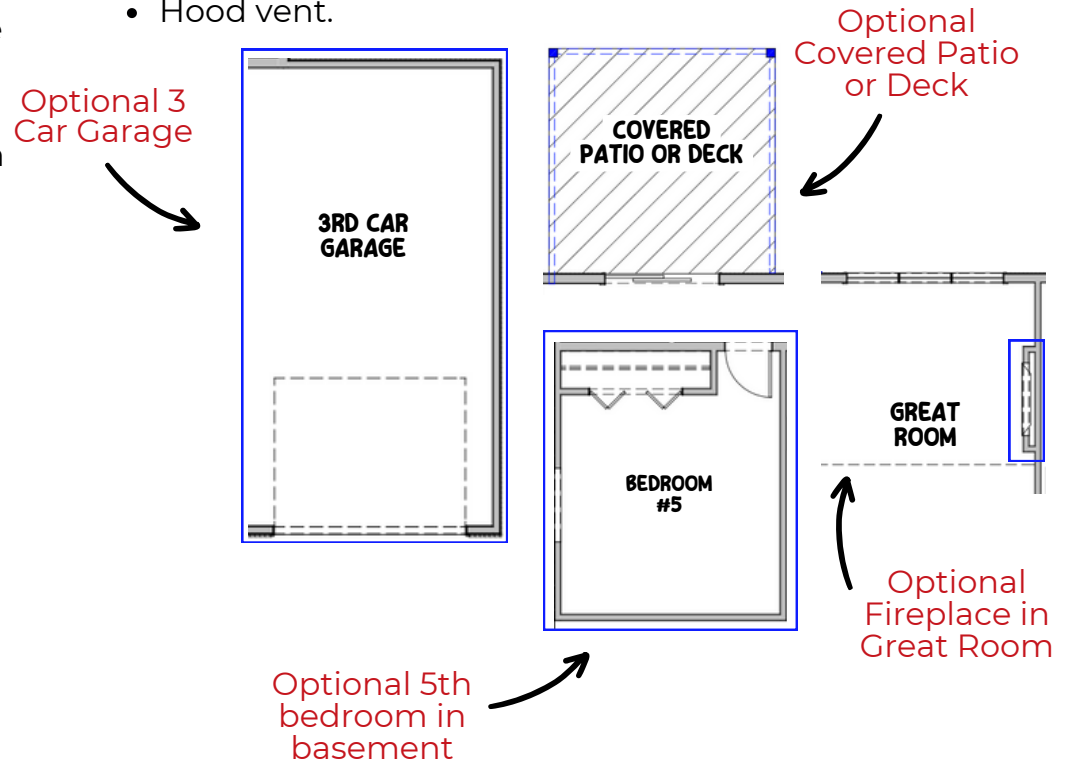
# Mullen I

THI Builders presents, The Mullen. With curb appeal that feels like it was cut straight out of Magnolia magazine, this spacious ranch-style home is a show-stopper and no surprise – one of our most popular ranch plans! A unique open-concept floor plan that features vaulted ceilings in the great room, an eat-in kitchen, spacious living room, and three large bedrooms on the main floor. The kitchen includes a large island w/ 12” overhang and all kitchen appliances included! The primary bedroom features an ensuite with a double vanity, ¾ bath, and a walk-in closet. Option to finish the expansive lower level with a massive rec room, 4th bedroom, and 3rd bathroom. Huge unfinished area perfect for storage, a workshop, or an in-home gym. This plan is one you will absolutely want on your list – schedule your showing today!

***There are two size options of The Mullen – 1,420 sq. ft. on the main floor or 1,603 sq. ft. on the main floor.***

## Common Upgrades & Floor Plan Additions

- Three-car garage.
- Covered patio or deck (depending on lot style)
- Electric fireplace with mantel & stone & tile options.
- Hood vent.



**See all of our floor plans here!**



**Build Your Dream House Today!**  
**402.281.9115**