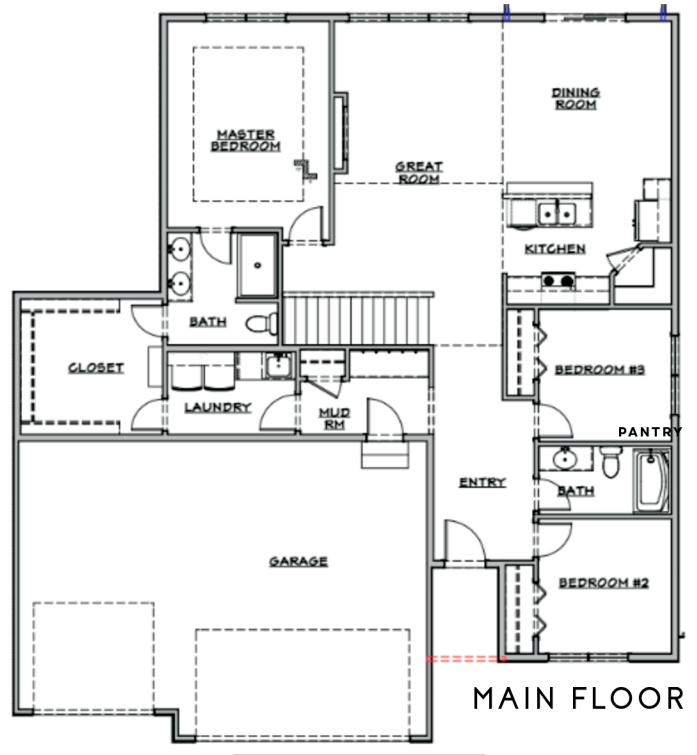
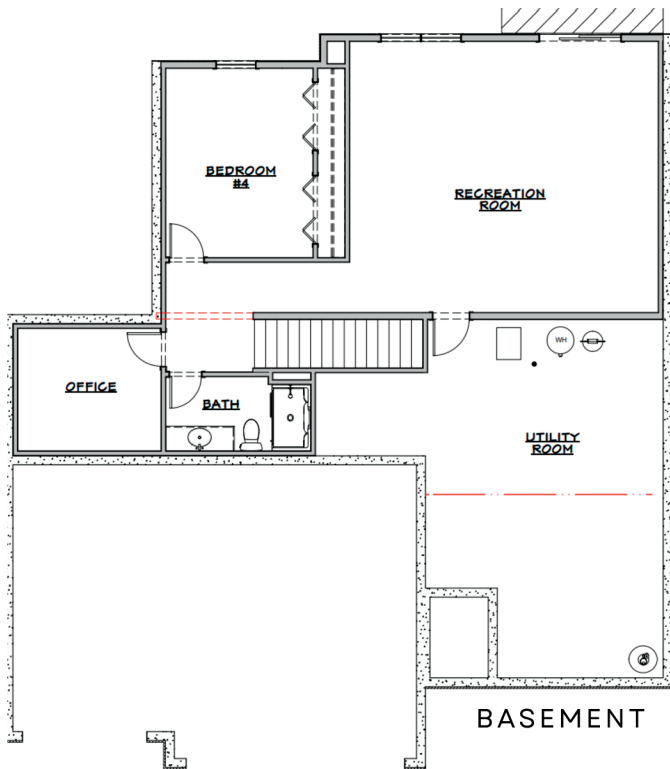


THE CHAMBERS II



3 bed | 2 bath | 1,638 sq ft

basement adds: 1 beds | 1 office | 1 bath | 978 sq ft



www.thibuilders.com

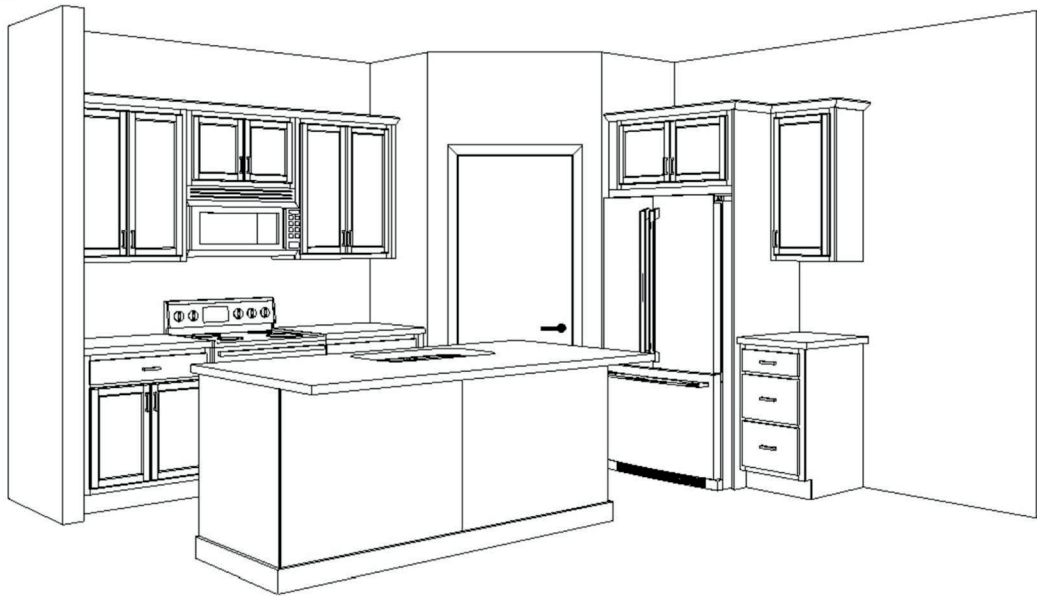
402.281.9115

Artist rendering may vary from plan. Prices, elevations and floor plans may be subject to change. See sales associate for details.

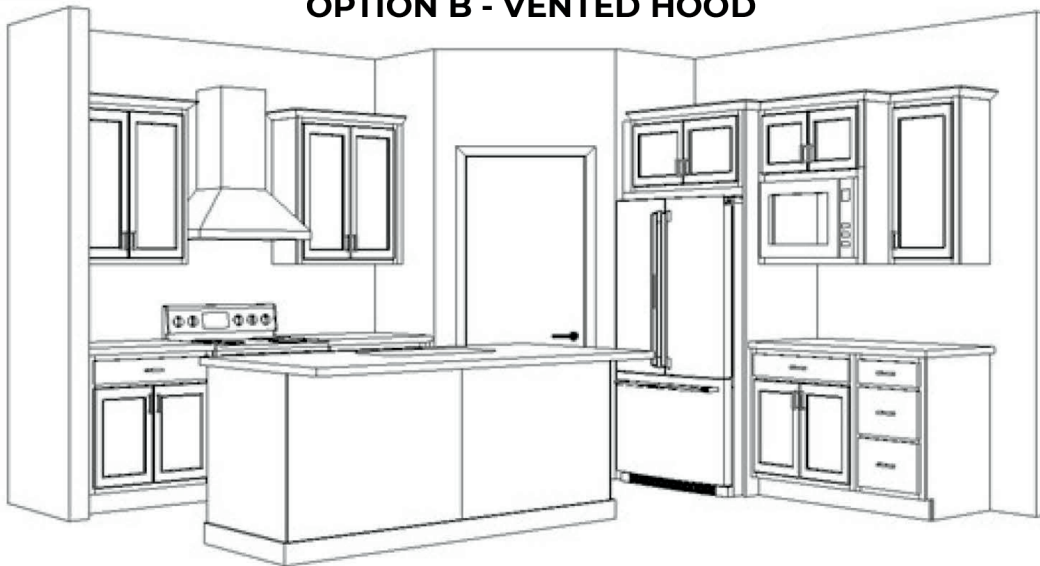
THE CHAMBERS II

KITCHEN OPTIONS

OPTION A



OPTION B - VENTED HOOD



Vented Gas hood above stove. Built-in Microwave moves next to refrigerator and extra cabinetry added.

Artist rendering may vary from plan. Prices, elevations and floor plans may be subject to change. See sales associate for details.



www.thibuilders.com
402.281.9115