



# Taylor II

2-Story home | 2,280 SQ.FT  
4 bedrooms & office + flex room | 3 baths

**Finished Basement Adds**  
1 or 2 bedrooms | 1 bathroom | 640 SQ.FT or 891



## Standard Features

- LVP flooring throughout main floor.
- Fans & overhead lighting in all bedrooms and living room.
- Quartz countertops in kitchen & in bathrooms.
- Rough-ins included in unfinished basement.
- Tankless water heater.
- Stainless Steel GE Appliances



Prices, elevations, and floor plans may be subject to change, see sales associate for details. 01/2025

\*\*\*Waiting on final 3D exterior renderings



# Taylor II

## Floor Plan

### What Sets Us Apart from Other Home Builders?

We strive to build the trust of our clients through collaborative decision-making, quality results, and the recognition of issues that are most important to clients.

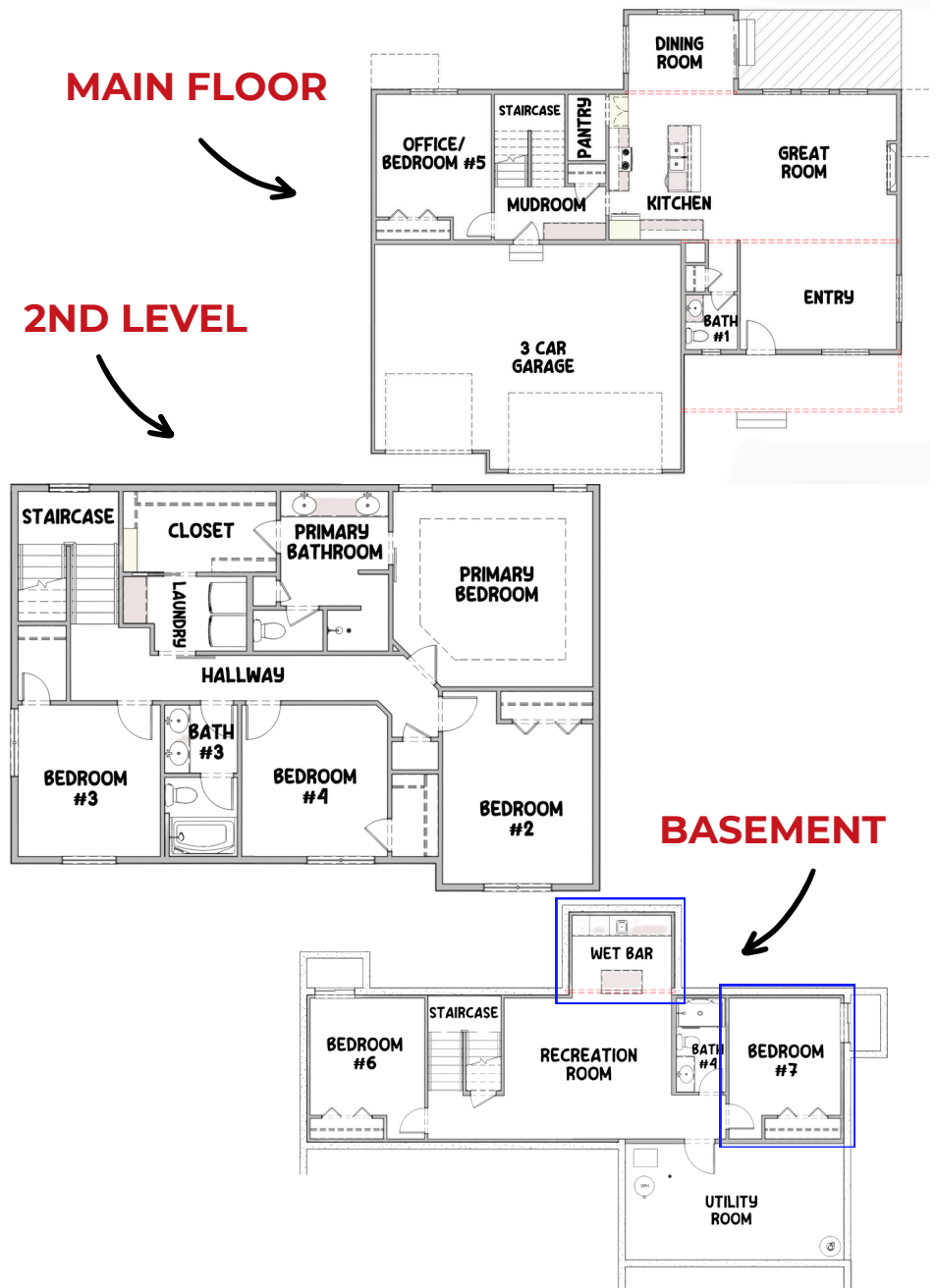
Known for being the highest value provider of construction services locally.

- Recognized for developing and embracing emerging technologies and processes.
- Offering a more diversified set of innovative services.
- Serving a broader geographic market
- Responsive to the needs of our clients, our employees, and our communities

### Average Cost of Design Consultation Upgrades

# \$10,000 - \$15,000

Artist rendering may vary from plan. prices, elevations, and floor plans may be subject to change, see sales associate for details. 01/2025





# Taylor II

THI Builders presents, The Taylor. The possibilities are endless with this cherished 2-story plan that quickly became a fan-favorite. Designed with practicality in mind, this home features a mudroom off the garage entry and an oversized 3-car garage that is standard. This stunning, newly designed home combines modern convenience with timeless architectural details. Featuring 4 bedrooms on the second-level and a possible dedicated office space on the main floor, The Taylor layout offers flexibility for families of all sizes. The open-concept main floor boasts a spacious kitchen with ample counter space, seamlessly flowing into the dining and living areas. The second floor hosts four generously sized bedrooms, including a luxurious primary suite complete with a walk-in closet and spa-like ensuite. A conveniently located laundry room on this level adds ease to everyday living. The option to finish the basement offers additional recreational space, two extra bedrooms, and a full bathroom, perfect for guests or a growing household. Schedule your tour of The Taylor today!

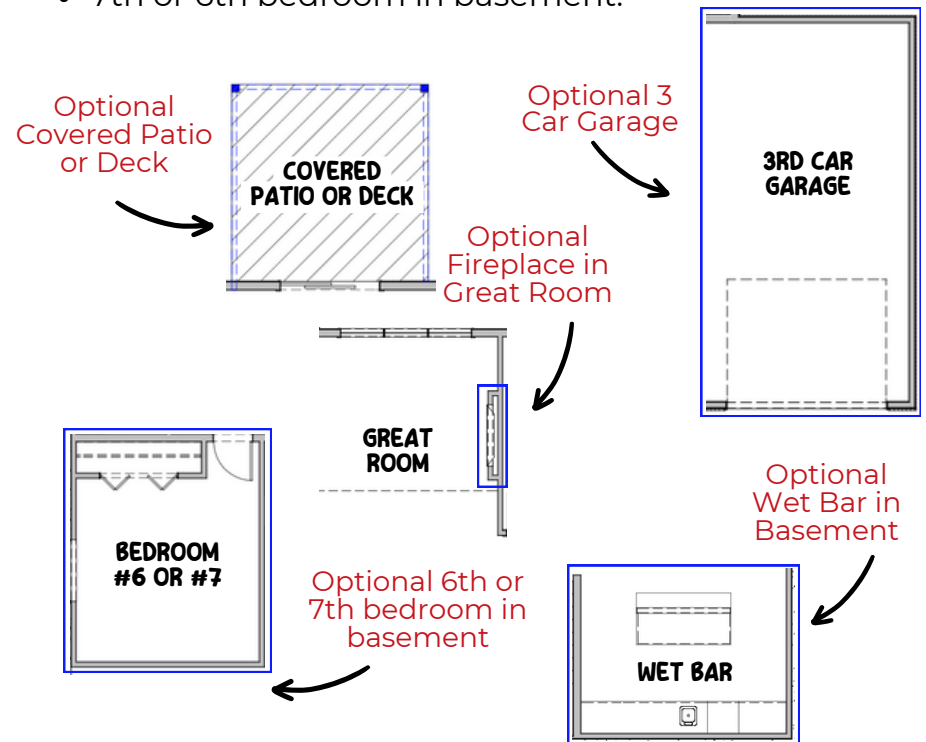
**There are two size options of The Taylor – 2,280 sq. ft. above grade or 2,409 sq. ft. above grade.**

**See all of our floor plans here!**



## Common Upgrades & Floor Plan Additions

- Three-car garage.
- Covered patio or deck (depending on lot style).
- Electric fireplace with mantel & stone & tile options.
- Hood vent.
- Wet Bar in Basement
- 7th or 6th bedroom in basement.



**Build Your Dream House Today!**  
**402.281.9115**