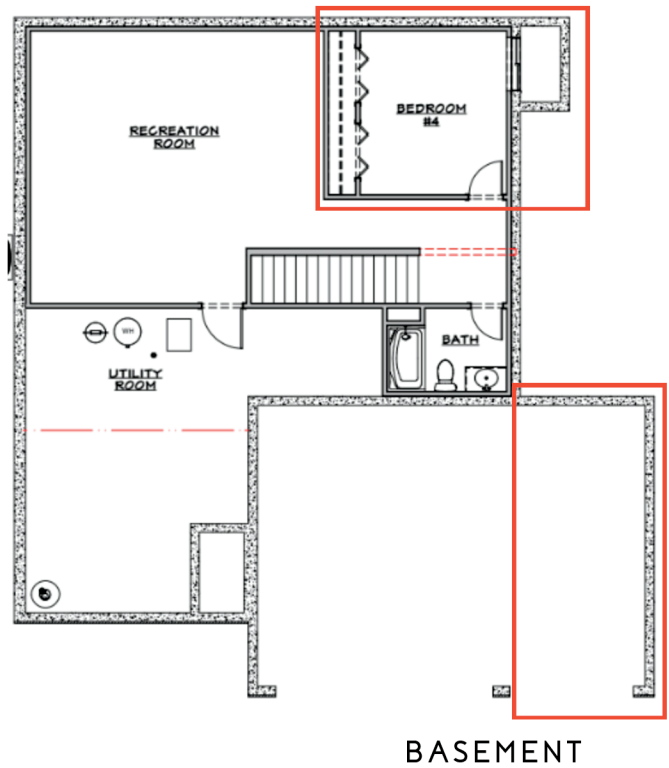
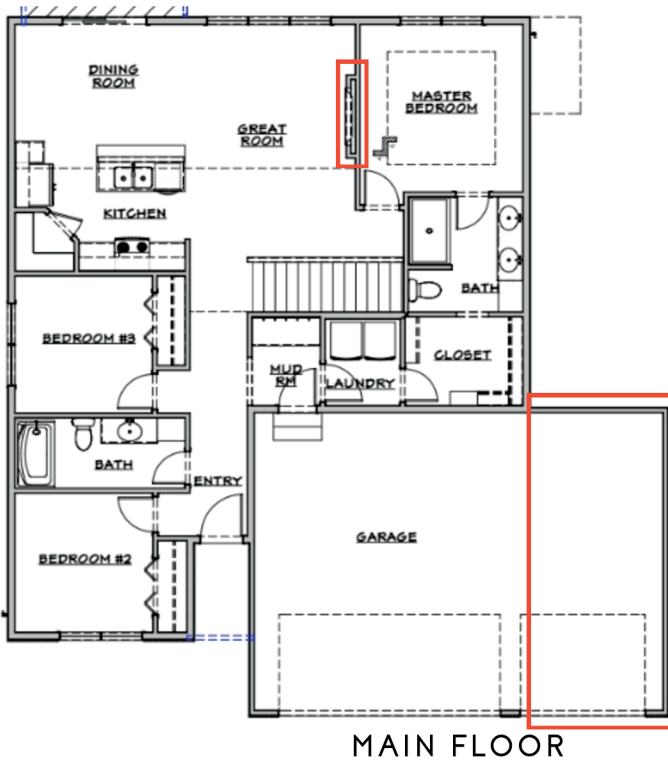


THE CHAMBERS I



3 bed | 2 bath | 1,348 sq ft

basement adds: 1 beds | 1 bath | 825 sq ft



Artist rendering may vary from plan. Prices, elevations and floor plans may be subject to change. See sales associate for details.

items in RED are optional upgrades



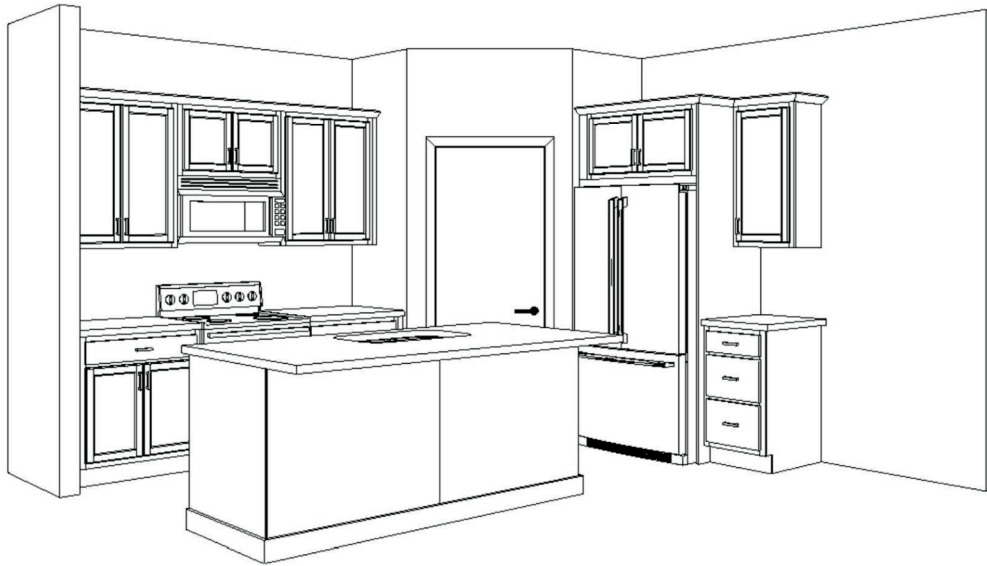
www.thibuilders.com

402.281.9115

THE CHAMBERS I

KITCHEN OPTIONS

OPTION A



OPTION B - VENTED HOOD



Vented Gas hood above stove. Built-in Microwave moves next to refrigerator and extra cabinetry added.

Artist rendering may vary from plan. Prices, elevations and floor plans may be subject to change. See sales associate for details.



www.thibuilders.com
402.281.9115