



Elevation A



Elevation B



Chambers 1

Ranch style home | 1,348 SQ.FT.
3 bedrooms | 2 bathrooms

Finished Basement Adds 
1 bedroom | 1 bathroom | 721 SQ. FT.

Standard Features

- LVP flooring throughout main floor.
- Fans & overhead lighting in all bedrooms and living room.
- Quartz countertops in kitchen & in bathrooms.
- Rough-ins included in unfinished basement.
- Tankless water heater.
- Stainless Steel GE Appliances



Elevation C

Prices, elevations, and floor plans may be subject to change, see sales associate for details. 01/2025



OUR MOST POPULAR PLAN Chambers 1

What Sets Us Apart from Other Home Builders?

We strive to build the trust of our clients through collaborative decision-making, quality results, and the recognition of issues that are most important to clients.

Known for being the highest value provider of construction services locally.

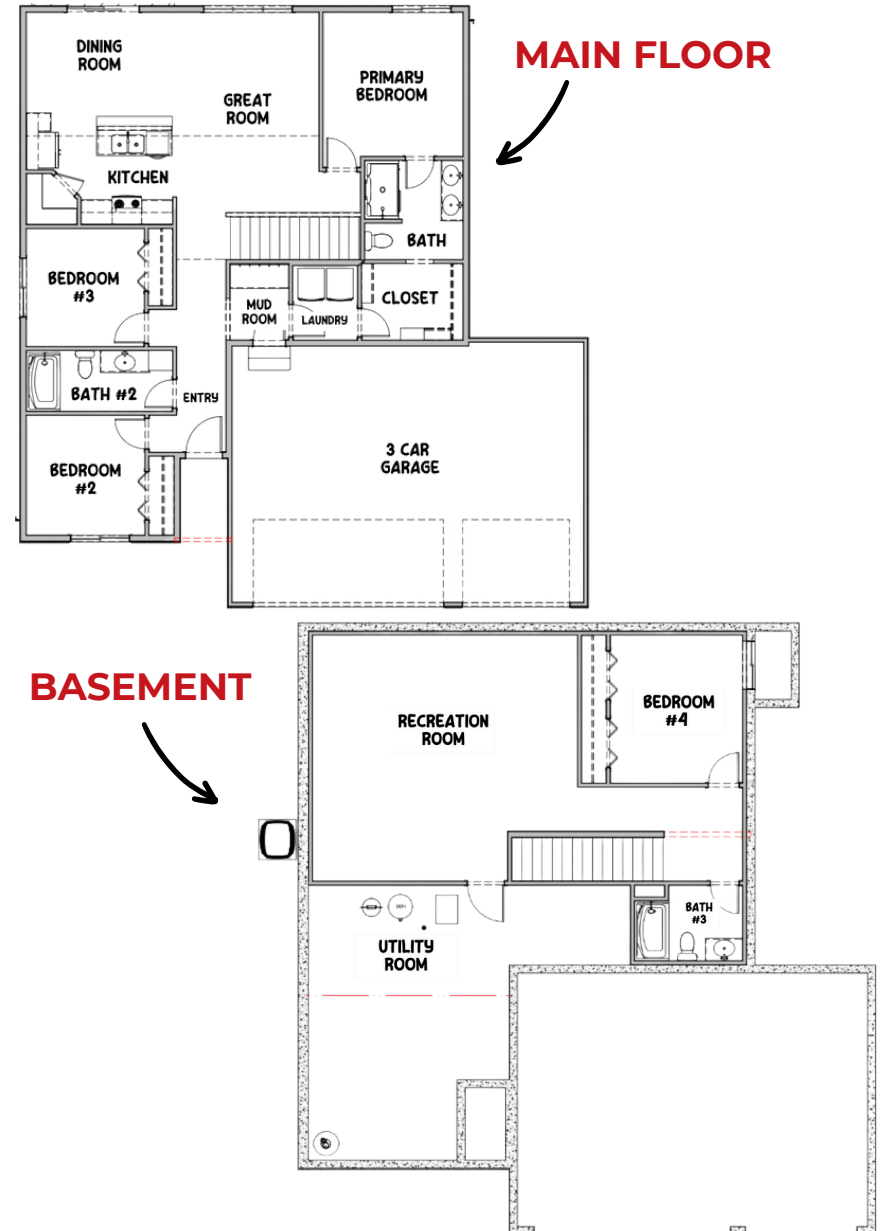
- Recognized for developing and embracing emerging technologies and processes.
- Offering a more diversified set of innovative services.
- Serving a broader geographic market
- Responsive to the needs of our clients, our employees, and our communities

Average Cost of Design Consultation Upgrades

\$10,000 - \$15,000

Artist rendering may vary from plan. prices, elevations, and floor plans may be subject to change, see sales associate for details. 01/2025

Floor Plan





OUR MOST POPULAR PLAN

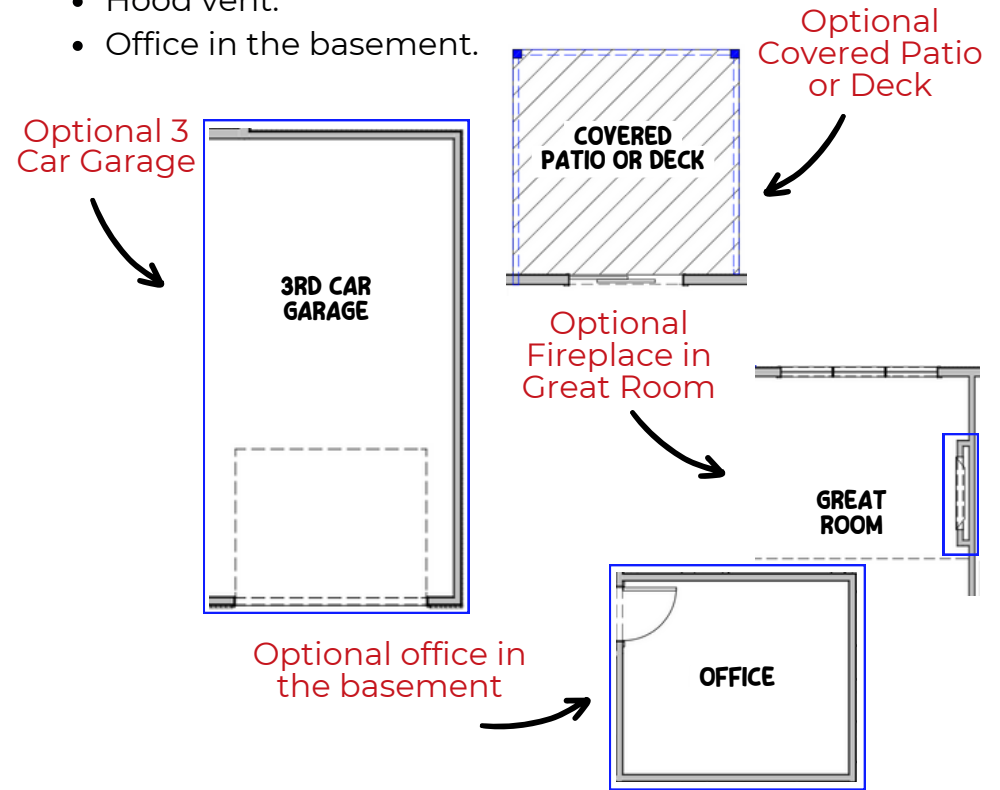
Chambers 1

Common Upgrades & Floor Plan Additions

THI Builders presents, The Chambers. This popular ranch-style plan has earned a badge for one of our most popular plans to date. From the cathedral ceilings to the open-concept flow, The Chambers is sure to impress! A large great room, dining area, and kitchen all with LVP flooring that comes standard makes this space versatile and spacious in all the right places! This kitchen includes a 6 foot island w/ 12" overhang, walk-in pantry, and all kitchen appliances included! The main floor includes a very popular split-room set up that has two spacious bedrooms with a full bathroom on one side of the home separate from the oversized primary bedroom and primary bathroom ensuite. The primary bedroom bathroom flows into a large walk-in closet and then into the main floor laundry room. From the laundry room you can access the mud room off of the entry from the garage. Finish the lower level to include a 4th bedroom, 3rd bathroom, office, and massive rec room space! All of that, PLUS an insane amount of storage space in the unfinished area. Schedule your tour of The Chambers today!

There are two size options of The Chambers – 1,348 sq. ft. on the main floor or 1,638 sq. ft. on the main floor.

- Three-car garage.
- Covered patio or deck (depending on lot style)
- Electric fireplace with mantel & stone & tile options.
- Hood vent.
- Office in the basement.



See all of our floor plans here!



Build Your Dream House Today!
402.281.9115