



Bennett

2-Story home | 1,911 SQ.FT.
3 bedrooms & office | 3 bathrooms

Finished Basement Adds 
1 bedroom | 1 bathroom | 912 SQ.FT.

Standard Features

- LVP flooring throughout main floor.
- Fans & overhead lighting in all bedrooms and living room.
- Quartz countertops in kitchen & in bathrooms.
- Rough-ins included in unfinished basement.
- Tankless water heater.
- Stainless Steel GE Appliances



Prices, elevations, and floor plans may be subject to change, see sales associate for details. 01/2025



Floor Plan

What Sets Us Apart from Other Home Builders?

We strive to build the trust of our clients through collaborative decision-making, quality results, and the recognition of issues that are most important to clients.

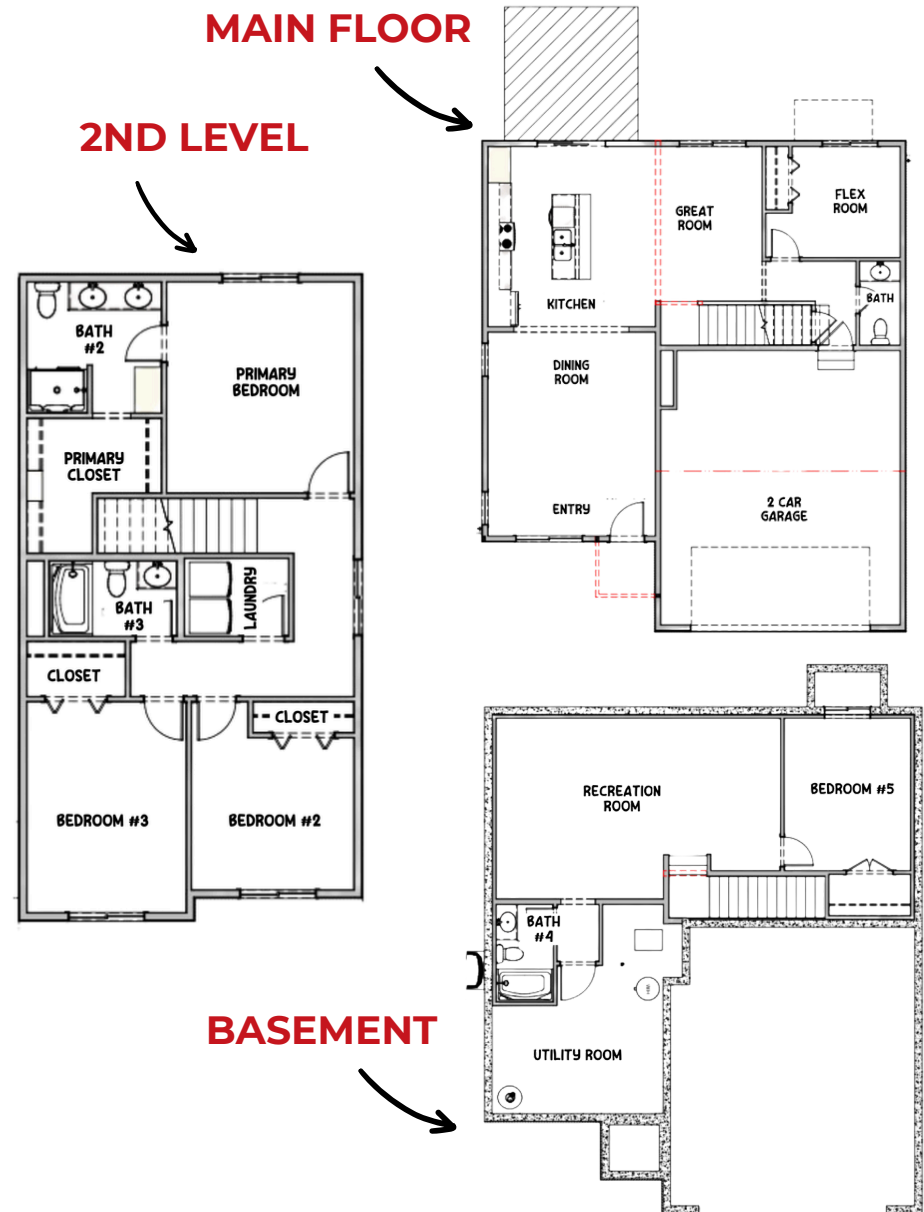
Known for being the highest value provider of construction services locally.

- Recognized for developing and embracing emerging technologies and processes.
- Offering a more diversified set of innovative services.
- Serving a broader geographic market
- Responsive to the needs of our clients, our employees, and our communities

Average Cost of Design Consultation Upgrades

\$10,000 - \$15,000

Artist rendering may vary from plan. prices, elevations, and floor plans may be subject to change, see sales associate for details. 01/2024



THI BUILDERS Bennett

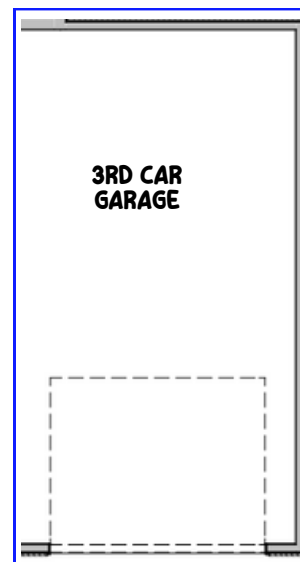
THI Builders presents, The Bennett. The “starter” home you will instantly fall in love with! This plan has everything you need – and then space for more! Designed with practicality in mind, this home features a unique layout for a 2-story home with a hidden staircase to the 2nd level off the garage entry plus a hidden office / legal bedroom! Featuring 3 spacious bedrooms on the second-level plus the laundry room. The Bennett layout offers flexibility for families of all sizes. The open-concept main floor boasts a spacious kitchen with ample counter space, seamlessly flowing into the dining and living areas. The extended overhang quartz countertop island is the perfect spot for barstools. All stainless steel appliances are included! LVP flooring throughout the main floor, and carpet in all the bedrooms. Main floor powder bath is out of the way and not a focal point – perfect for privacy. A luxurious primary suite complete with a walk-in closet and spa-like ensuite will greet you on the 2nd floor. 2 additional spacious bedrooms and another full bath. The option to finish the basement offers additional recreational space, an extra bedroom, and a full bathroom – perfect for guests or a growing household. Schedule your tour of The Bennett today!

See all of our floor plans here!

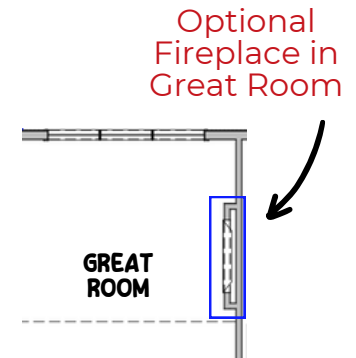


Common Upgrades & Floor Plan Additions

- Three-car garage.
- Covered patio or deck (depending on lot style).
- Electric fireplace with mantel & stone & tile options.
- Hood vent.



Optional 3 Car Garage



Optional Covered Patio or Deck

Build Your Dream House Today!
402.281.9115