



Hampton

2-Story home | 1,827 SQ.FT.
4 bedrooms | 3 bathrooms

Finished Basement Adds 
1 bedrooms | 1 bathroom | 702 SQ.FT.

Standard Features

- LVP flooring throughout main floor.
- Fans & overhead lighting in all bedrooms and living room.
- Quartz countertops in kitchen & in bathrooms.
- Rough-ins included in unfinished basement.
- Tankless water heater.
- Stainless Steel GE Appliances



Prices, elevations, and floor plans may be subject to change, see sales associate for details. 01/2025



Hampton

What Sets Us Apart from Other Home Builders?

We strive to build the trust of our clients through collaborative decision-making, quality results, and the recognition of issues that are most important to clients.

Known for being the highest value provider of construction services locally.

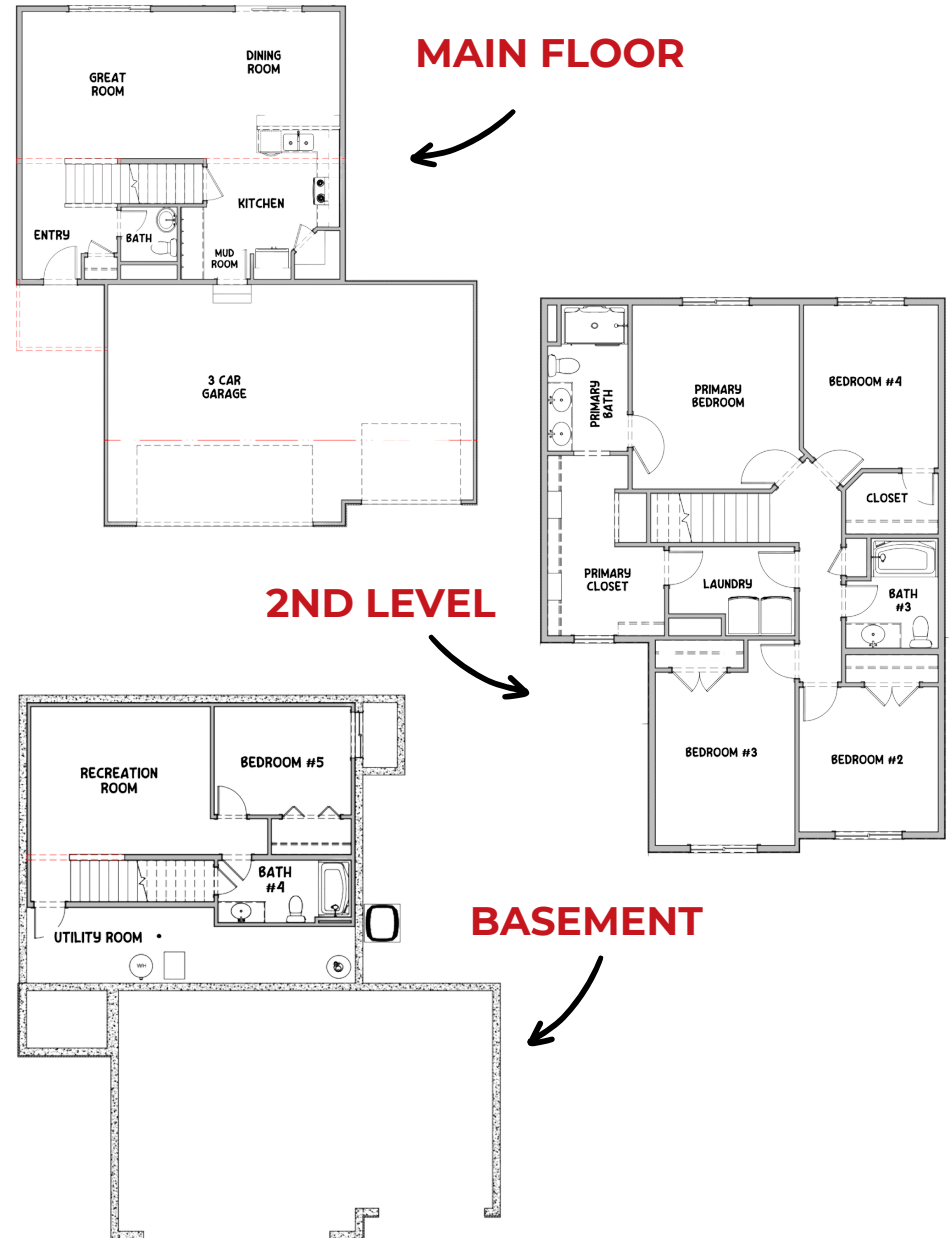
- Recognized for developing and embracing emerging technologies and processes.
- Offering a more diversified set of innovative services.
- Serving a broader geographic market
- Responsive to the needs of our clients, our employees, and our communities

Average Cost of Design Consultation Upgrades

\$10,000 - \$15,000

Artist rendering may vary from plan. prices, elevations, and floor plans may be subject to change, see sales associate for details. 01/2025

Floor Plan

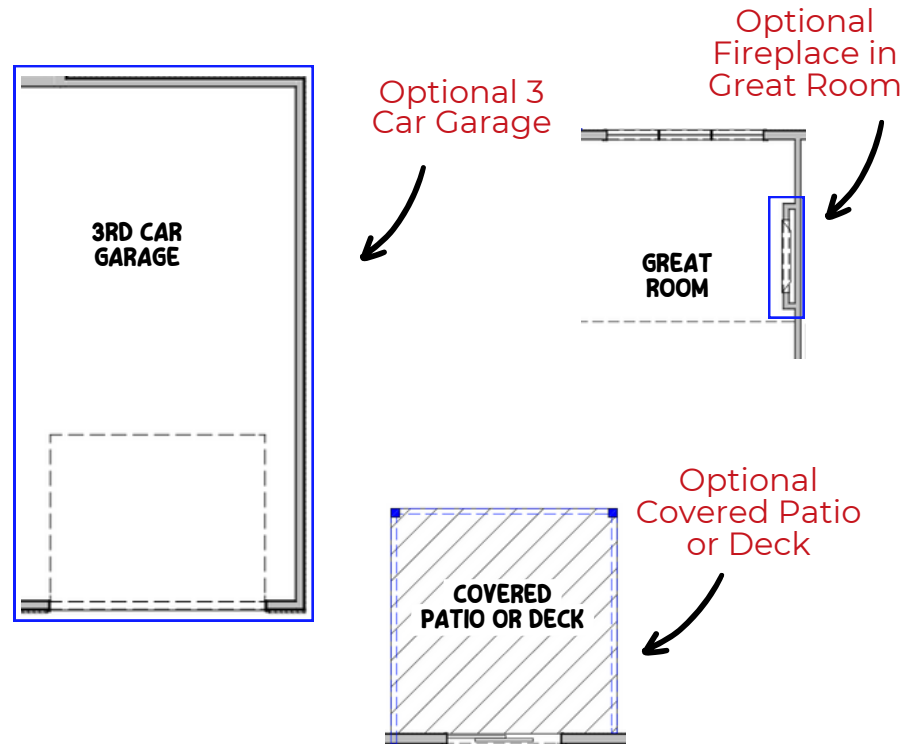


THI BUILDERS Hampton

THI Builders presents, The Hampton. This 2-story plan has everything needed for perfect curb appeal including a well-designed main floor, 4 second-level bedrooms, and 3 bathrooms! LVP flooring is standard throughout the main floor! The kitchen features a stunning quartz countertop overhang peninsula that is perfect for dining & any special occasion, a pantry, and a drop zone off of the garage. All stainless steel GE appliances in the kitchen are included! The 2nd level includes 4 huge bedrooms and a large primary bedroom ensuite with an enormous walk-in closet connecting to the 2nd floor laundry room! The finished basement could include a 5th bedroom with a full bath, located next to a huge carpeted rec room. Come see what all the buzz is about with The Hampton!

Common Upgrades & Floor Plan Additions

- Three-car garage.
- Covered patio or deck (depending on lot style).
- Electric fireplace with mantel & stone & tile options.
- Hood vent.



See all of our floor plans here!



Build Your Dream House Today!
402.281.9115