



Ansley

Ranch style home | 1,389 SQ.FT.
3 bedrooms | 2 bathrooms

Finished Basement Adds 
1 bedroom | 1 bathroom | 845 SQ. FT.

Standard Features

- LVP flooring throughout main floor.
- Fans & overhead lighting in all bedrooms and living room.
- Quartz countertops in kitchen & in bathrooms.
- Rough-ins included in unfinished basement.
- Tankless water heater.
- Stainless Steel GE Appliances



Prices, elevations, and floor plans may be subject to change, see sales associate for details. 01/2025



Ansley

What Sets Us Apart from Other Home Builders?

We strive to build the trust of our clients through collaborative decision-making, quality results, and the recognition of issues that are most important to clients.

Known for being the highest value provider of construction services locally.

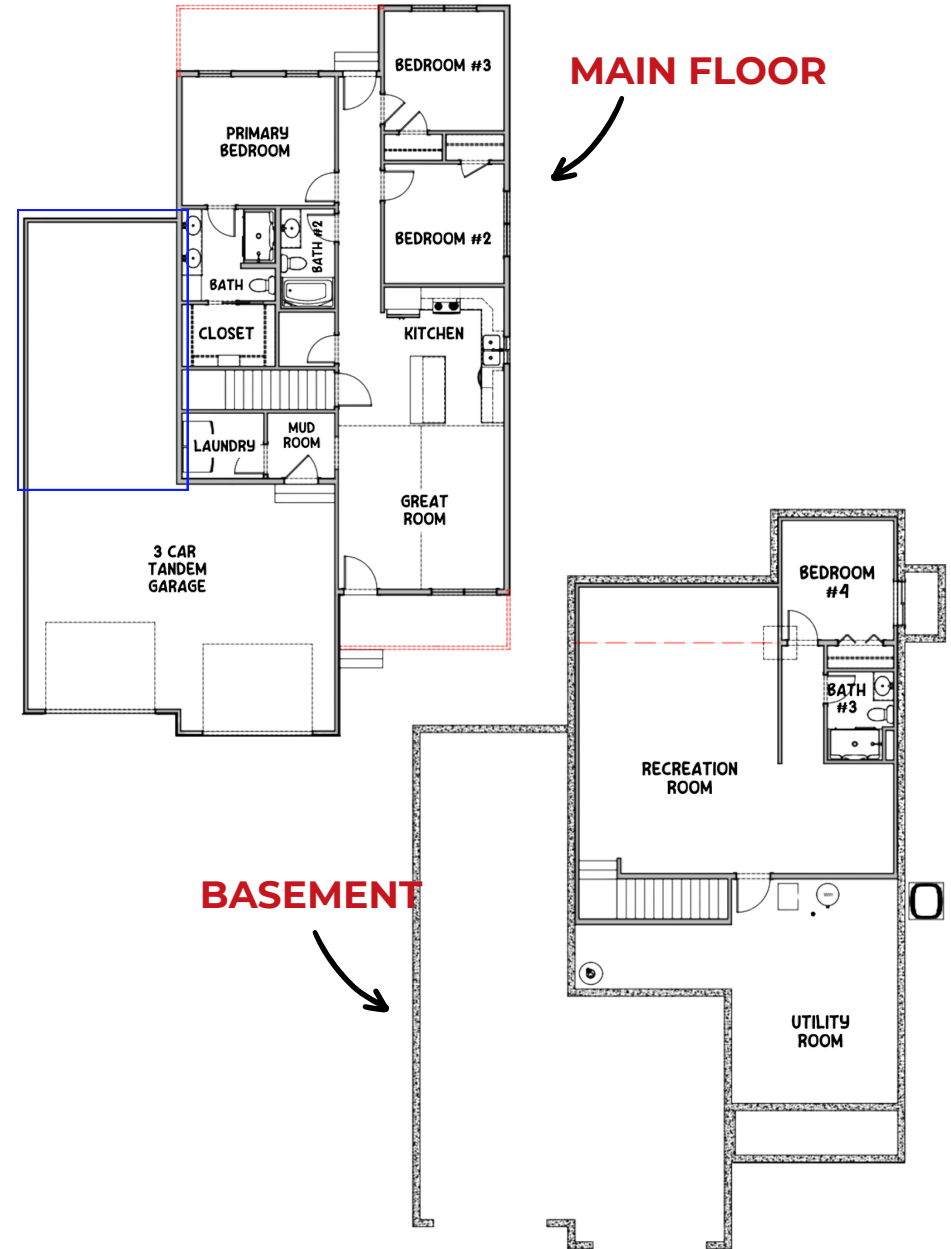
- Recognized for developing and embracing emerging technologies and processes.
- Offering a more diversified set of innovative services.
- Serving a broader geographic market
- Responsive to the needs of our clients, our employees, and our communities

Average Cost of Design Consultation Upgrades

\$10,000 - \$15,000

Artist rendering may vary from plan. prices, elevations, and floor plans may be subject to change, see sales associate for details. 01/2025

Floor Plan



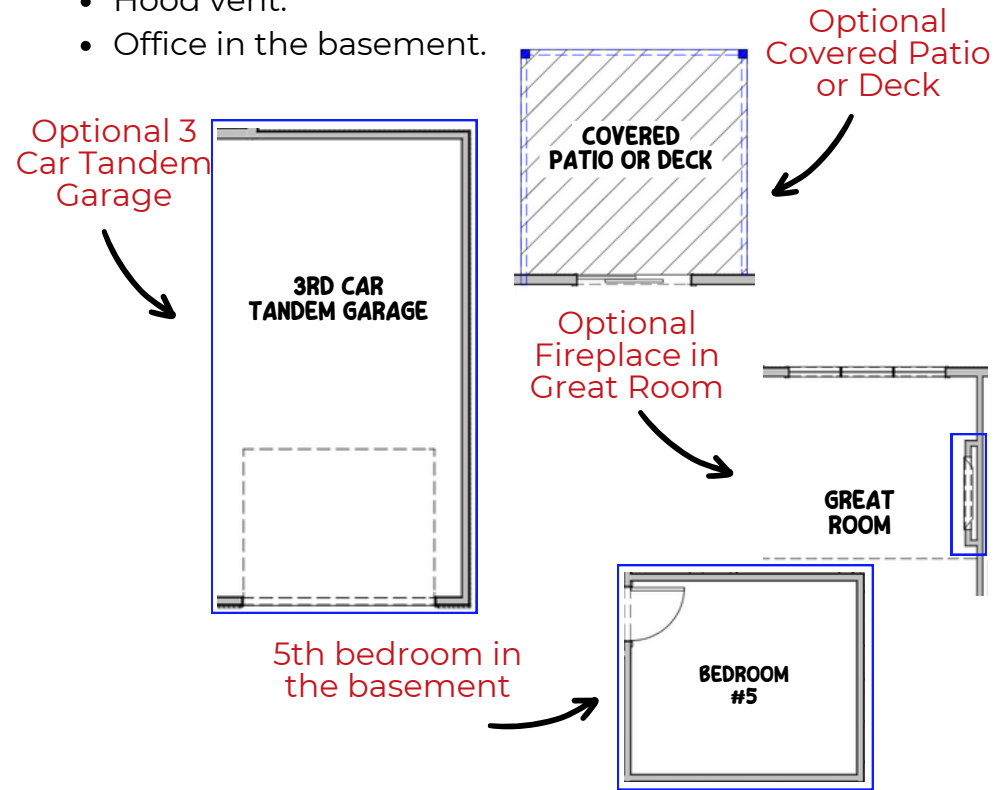


Ansley

need to get a description from brittney

Common Upgrades & Floor Plan Additions

- Three-car garage.
- Covered patio or deck (depending on lot style)
- Electric fireplace with mantel & stone & tile options.
- Hood vent.
- Office in the basement.



See all of our floor plans here!



Build Your Dream House Today!
402.281.9115