



Elevation A



Elevation B



## Palmer

2-Story style home | 2,759 SQ.FT.  
4 bedrooms | 3 bathrooms

### Finished Basement Adds

2 bedrooms | 1 bathroom | 1,280 SQ. FT.



## Standard Features

- LVP flooring throughout main floor.
- Fans & overhead lighting in all bedrooms and living room.
- Quartz countertops in kitchen & in bathrooms.
- Rough-ins included in unfinished basement.
- Tankless water heater.
- Stainless Steel GE Appliances



Prices, elevations, and floor plans may be subject to change, see sales associate for details. 01/2025



# Floor Plan

## What Sets Us Apart from Other Home Builders?

We strive to build the trust of our clients through collaborative decision-making, quality results, and the recognition of issues that are most important to clients.

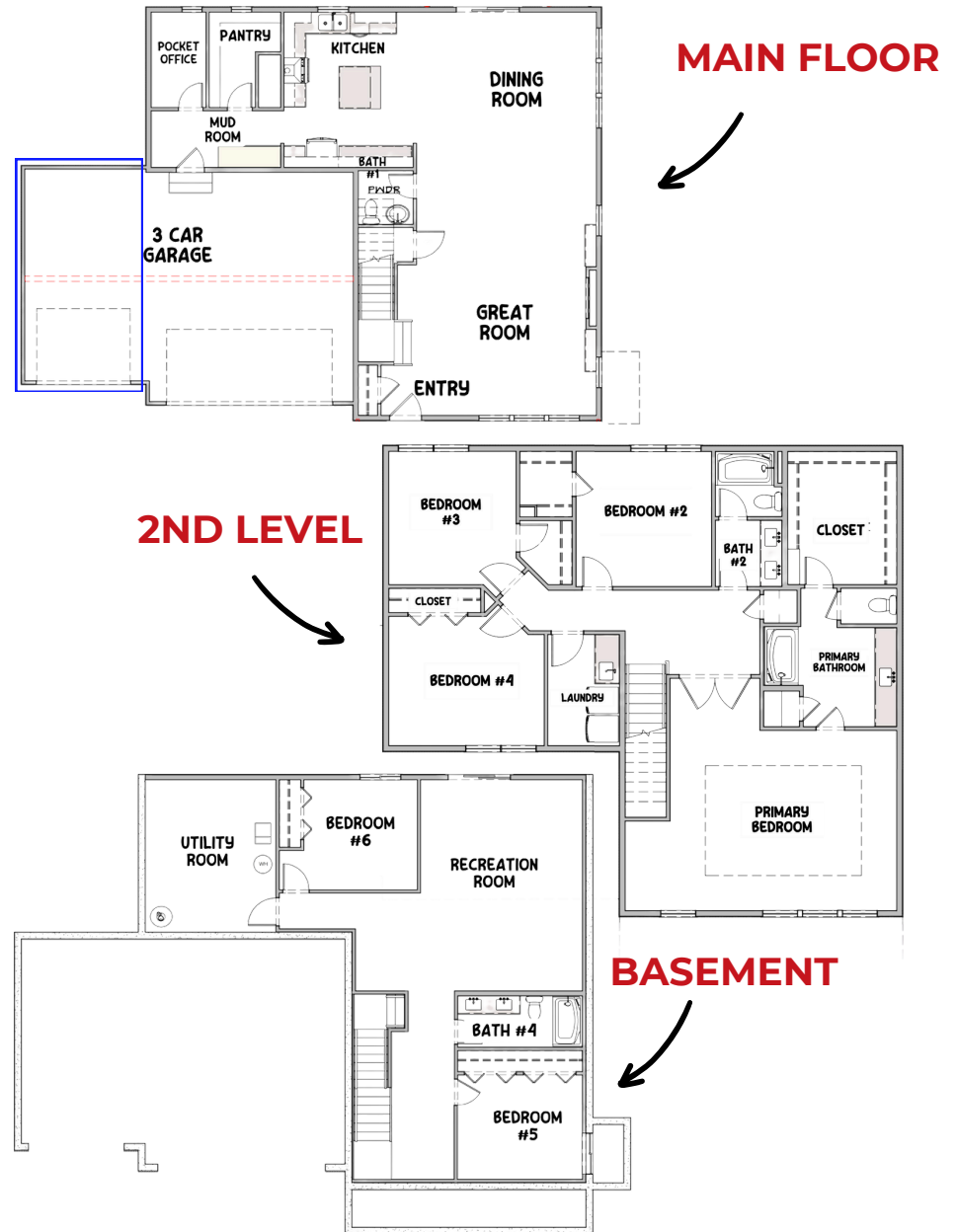
Known for being the highest value provider of construction services locally.

- Recognized for developing and embracing emerging technologies and processes.
- Offering a more diversified set of innovative services.
- Serving a broader geographic market
- Responsive to the needs of our clients, our employees, and our communities

## Average Cost of Design Consultation Upgrades

# \$10,000 - \$15,000

Artist rendering may vary from plan. prices, elevations, and floor plans may be subject to change, see sales associate for details. 01/2025



# THI BUILDERS Palmer

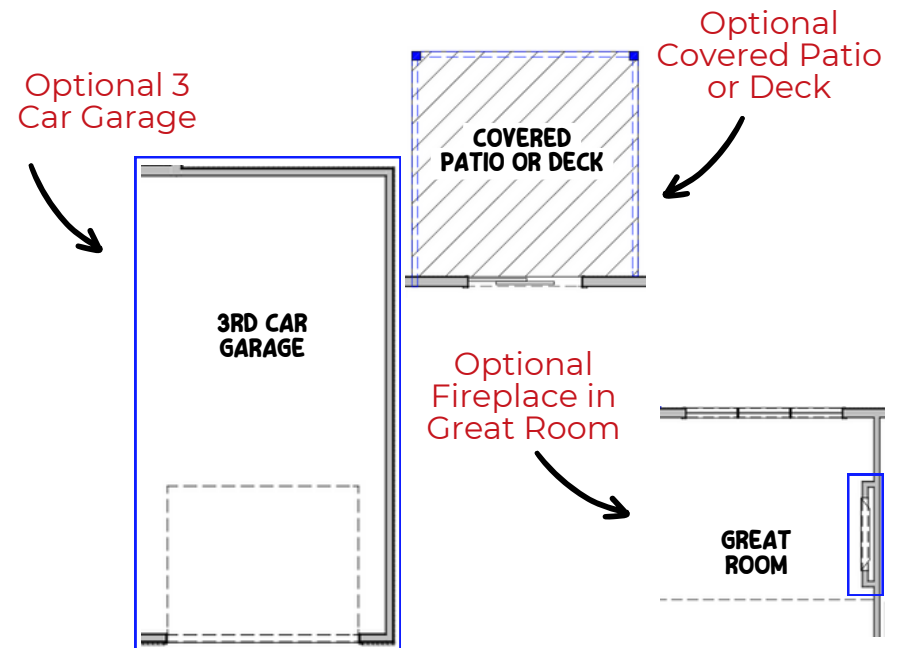
THI Builders presents, The Palmer. This plan has everything you need – and then space for more! Designed with practicality in mind, this home features a perfectly sized drop-zone off the garage entry plus a little pocket office! Featuring 4 spacious bedrooms on the second-level plus the laundry room. The Palmer layout offers flexibility for families of all sizes. The open-concept main floor boasts a spacious kitchen with ample counter space, seamlessly flowing into the dining and living areas. The extended overhang quartz countertop island is the perfect hang-out spot for all your holidays. All stainless steel appliances are included! LVP flooring throughout the main floor, and carpet in all the bedrooms. A luxurious primary suite complete with a walk-in closet and spa-like ensuite will greet you on the 2nd floor. 3 additional spacious bedrooms and another full bath. The option to finish the basement offers additional recreational space, two extra bedrooms, and a full bathroom, perfect for guests or a growing household. Schedule your tour of The Palmer today!

See all of our floor plans here!



## Common Upgrades & Floor Plan Additions

- Three-car garage.
- Covered patio or deck (depending on lot style)
- Electric fireplace with mantel & stone & tile options.
- Hood vent.



Build Your Dream House Today!  
402.281.9115