



Elevation A



Elevation B



Minden

Ranch style home | 1,602 SQ.FT.
3 bedrooms | 2 bathrooms

Finished Basement Adds 
2 bedrooms | 1 bathroom | 1,013 SQ.FT.

Standard Features

- LVP flooring throughout main floor.
- Fans & overhead lighting in all bedrooms and living room.
- Quartz countertops in kitchen & in bathrooms.
- Rough-ins included in unfinished basement.
- Tankless water heater.
- Stainless Steel GE Appliances



Prices, elevations, and floor plans may be subject to change, see sales associate for details. 01/2025



What Sets Us Apart from Other Home Builders?

We strive to build the trust of our clients through collaborative decision-making, quality results, and the recognition of issues that are most important to clients.

Known for being the highest value provider of construction services locally.

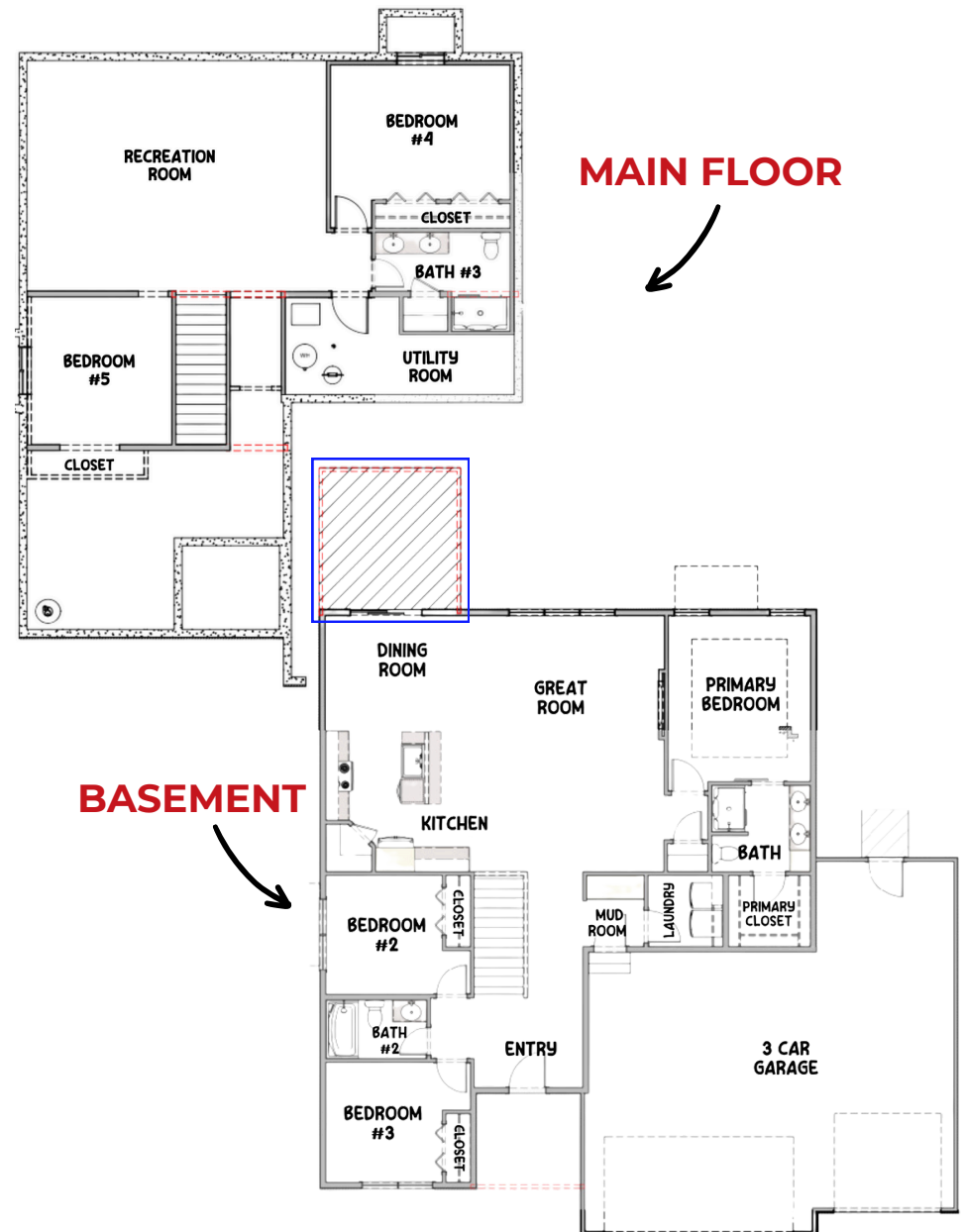
- Recognized for developing and embracing emerging technologies and processes.
- Offering a more diversified set of innovative services.
- Serving a broader geographic market
- Responsive to the needs of our clients, our employees, and our communities

Average Cost of Design Consultation Upgrades

\$10,000 - \$15,000

Artist rendering may vary from plan. prices, elevations, and floor plans may be subject to change, see sales associate for details. 01/2024

Floor Plan

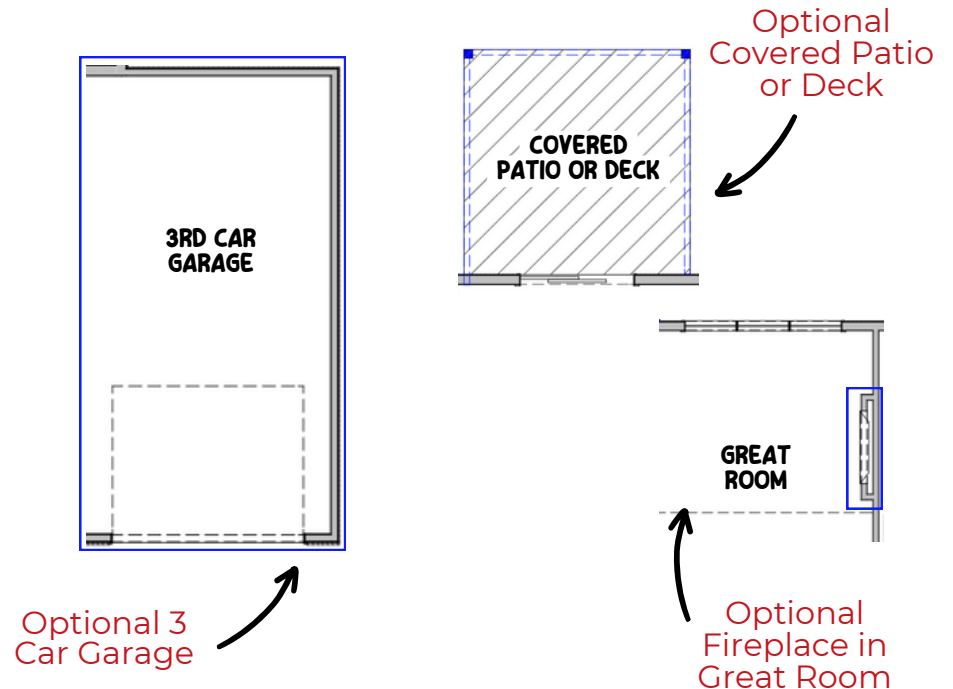


THI BUILDERS Minden

THI Builders presents, The Minden. This beloved ranch-style plan has stolen the hearts of many, and is sure to make yours skip a beat as well. The expansive main floor has an ever-popular split-bedroom style layout, drop zone, main floor laundry, and a spacious kitchen and living room area. The kitchen includes a large island w/ 12" overhang, corner pantry, and all kitchen appliances included! The primary bedroom is sized to perfection and the attached ensuite includes a dual vanity and walk-in closet. Finish the basement to include 2 additional large bedrooms, a ¾ bath, massive rec room, and ample storage! See this gorgeous plan for yourself today!

Common Upgrades & Floor Plan Additions

- Three-car garage.
- Covered patio or deck (depending on lot style)
- Electric fireplace with mantel & stone & tile options.
- Hood vent.



See all of our floor plans here!



Build Your Dream House Today!
402.281.9115