



Greeley

2-Story home | 2,100 SQ.FT.
3 bedrooms | 3 bathrooms

Finished Basement Adds 
1 bedroom | 1 bathroom | 810 SQ.FT.

Standard Features

- LVP flooring throughout main floor.
- Fans & overhead lighting in all bedrooms and living room.
- Quartz countertops in kitchen & in bathrooms.
- Rough-ins included in unfinished basement.
- Tankless water heater.
- Stainless Steel GE Appliances



Prices, elevations, and floor plans may be subject to change, see sales associate for details. 01/2025



Greeley

What Sets Us Apart from Other Home Builders?

We strive to build the trust of our clients through collaborative decision-making, quality results, and the recognition of issues that are most important to clients.

Known for being the highest value provider of construction services locally.

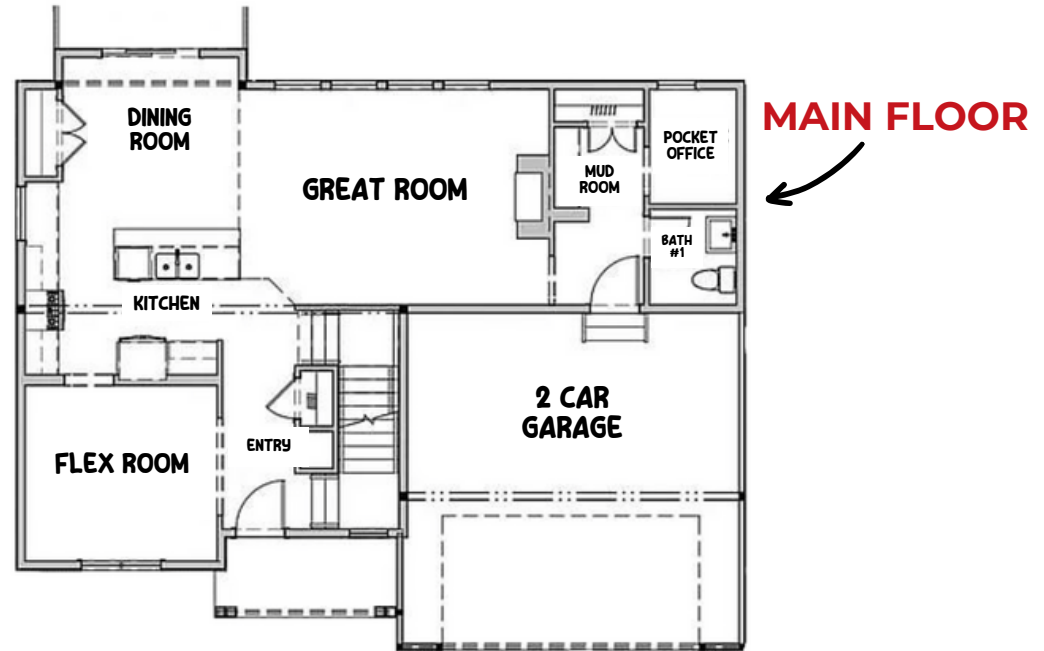
- Recognized for developing and embracing emerging technologies and processes.
- Offering a more diversified set of innovative services.
- Serving a broader geographic market
- Responsive to the needs of our clients, our employees, and our communities

Average Cost of Design Consultation Upgrades

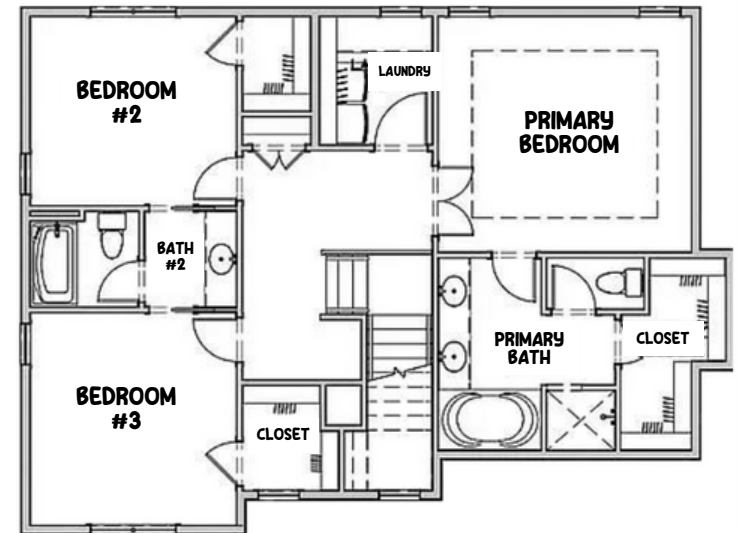
\$10,000 - \$15,000

Artist rendering may vary from plan. prices, elevations, and floor plans may be subject to change, see sales associate for details. 01/2024

Floor Plan



2ND LEVEL



BASEMENT: FLOOR PLAN UPON REQUEST

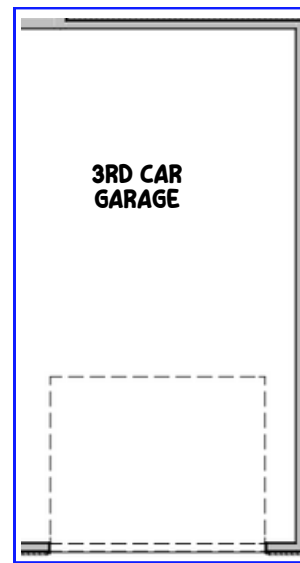


Greeley

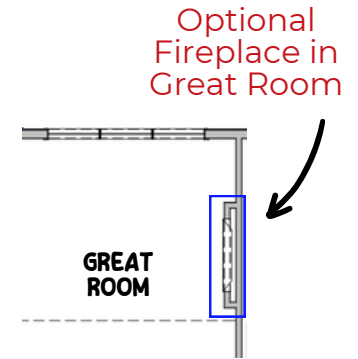
THI Builders presents The Greeley. A modern farmhouse vibe with timeless finishes makes this one of our favorite 2-story plans! The home features three bedrooms and three full bathrooms (one on the main floor and two upstairs). A pocket office off of the garage entrance & a flex room off of the kitchen are perfect for a playroom, office, or a formal dining room. Fall in love with the large kitchen, which features an overhanging island with quartz countertops and all stainless steel GE appliances (all standard). LVP flooring throughout the main floor & carpet in all bedrooms (also standard). Upstairs, you will find walk-in closets in all bedrooms & a “Jack-&-Jill” style bathroom for the two bedrooms! The primary bedroom features a private ensuite bathroom with a soaker tub, shower, & double vanity sinks. This home can have a finished basement, perfect for storage or additional rooms and entertaining space. Schedule your tour of The Greeley today!

Common Upgrades & Floor Plan Additions

- Three-car garage.
- Covered patio or deck (depending on lot style).
- Electric fireplace with mantel & stone & tile options.
- Hood vent.



Optional 3 Car Garage



Optional Fireplace in Great Room



Optional Covered Patio or Deck

See all of our floor plans here!



Build Your Dream House Today!
402.281.9115