



Elevation A



Elevation B



## Gibbon

Ranch style home | 1,634 SQ.FT.  
2 bedrooms | 2 bathrooms

**Finished Basement Adds**   
2 bedrooms | 1 bathroom | 1,027 SQ.FT.

## Standard Features

- LVP flooring throughout main floor.
- Fans & overhead lighting in all bedrooms and living room.
- Quartz countertops in kitchen & in bathrooms.
- Rough-ins included in unfinished basement.
- Tankless water heater.
- Stainless Steel GE Appliances



Prices, elevations, and floor plans may be subject to change, see sales associate for details. 01/2025



# Gibbon

## Floor Plan

### What Sets Us Apart from Other Home Builders?

We strive to build the trust of our clients through collaborative decision-making, quality results, and the recognition of issues that are most important to clients.

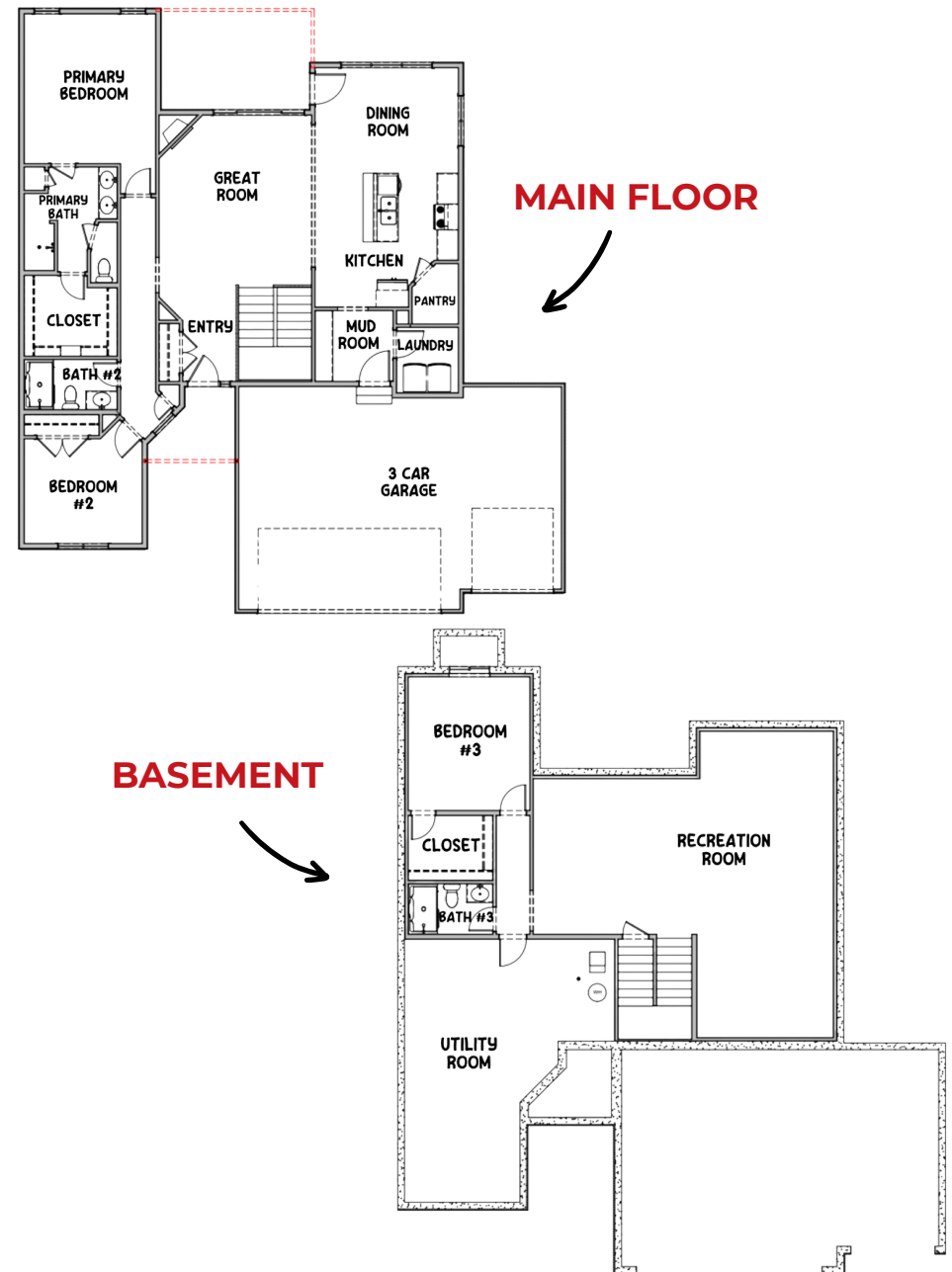
Known for being the highest value provider of construction services locally.

- Recognized for developing and embracing emerging technologies and processes.
- Offering a more diversified set of innovative services.
- Serving a broader geographic market
- Responsive to the needs of our clients, our employees, and our communities

### Average Cost of Design Consultation Upgrades

# \$10,000 - \$15,000

Artist rendering may vary from plan. prices, elevations, and floor plans may be subject to change, see sales associate for details. 01/2025



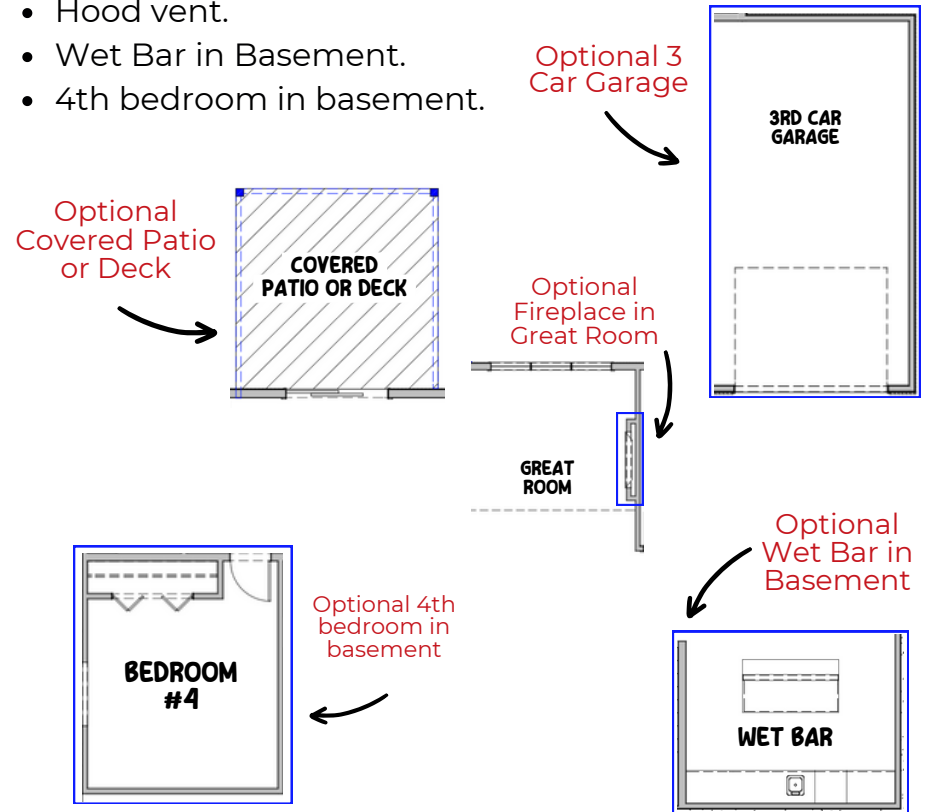


# Gibbon

THI Builders presents, The Gibbon. This gorgeous ranch plan is one-of-a-kind! The Gibbon's modern farmhouse feel on top of the timeless high-end finishes make this an easy choice for even the pickiest buyer. Over 1,600 finished square feet on the main floor. Spacious open-concept main floor with pantry, huge eat-in kitchen w/ large island (ALL stainless steel appliances included & LVP flooring throughout), and main floor laundry. Large mud room and attached laundry room off of the garage entrance. Two large bedrooms on the main level. The primary bedroom includes a primary ensuite that has a walk-in shower, toilet closet, and a massive walk-in closet. Option to finish the lower level with an additional bedroom, bathroom, and massive unfinished area that is great for storage. Perfect for the empty-nesters, downsizers, or even first time home buyers! Schedule your tour of The Gibbon today!

## Common Upgrades & Floor Plan Additions

- Three-car garage.
- Covered patio or deck (depending on lot style)
- Electric fireplace with mantel & stone & tile options.
- Hood vent.
- Wet Bar in Basement.
- 4th bedroom in basement.



See all of our floor plans here!



**Build Your Dream House Today!**  
**402.281.9115**