



## Ericson

Ranch style home | 1,647 SQ.FT.  
3 bedrooms | 3 bathrooms

**Finished Basement Adds**   
2 bedrooms | 1 bathroom | 1,001 SQ. FT.

## Standard Features

- LVP flooring throughout main floor.
- Fans & overhead lighting in all bedrooms and living room.
- Quartz countertops in kitchen & in bathrooms.
- Rough-ins included in unfinished basement.
- Tankless water heater.
- Stainless Steel GE Appliances



Prices, elevations, and floor plans may be subject to change, see sales associate for details. 01/2025



# Floor Plan

## What Sets Us Apart from Other Home Builders?

We strive to build the trust of our clients through collaborative decision-making, quality results, and the recognition of issues that are most important to clients.

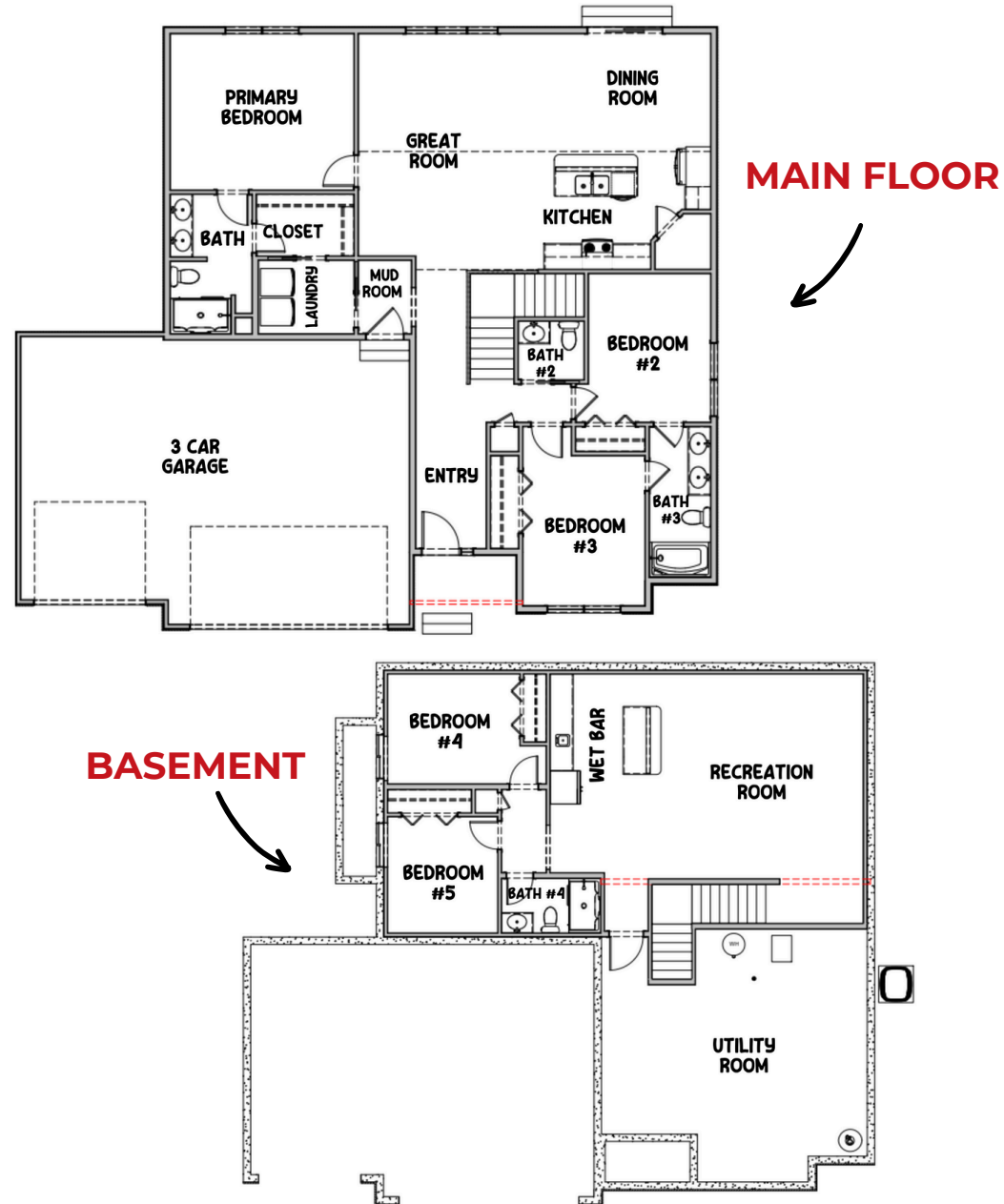
Known for being the highest value provider of construction services locally.

- Recognized for developing and embracing emerging technologies and processes.
- Offering a more diversified set of innovative services.
- Serving a broader geographic market
- Responsive to the needs of our clients, our employees, and our communities

## Average Cost of Design Consultation Upgrades

# \$10,000 - \$15,000

Artist rendering may vary from plan. prices, elevations, and floor plans may be subject to change, see sales associate for details.  
01/2025

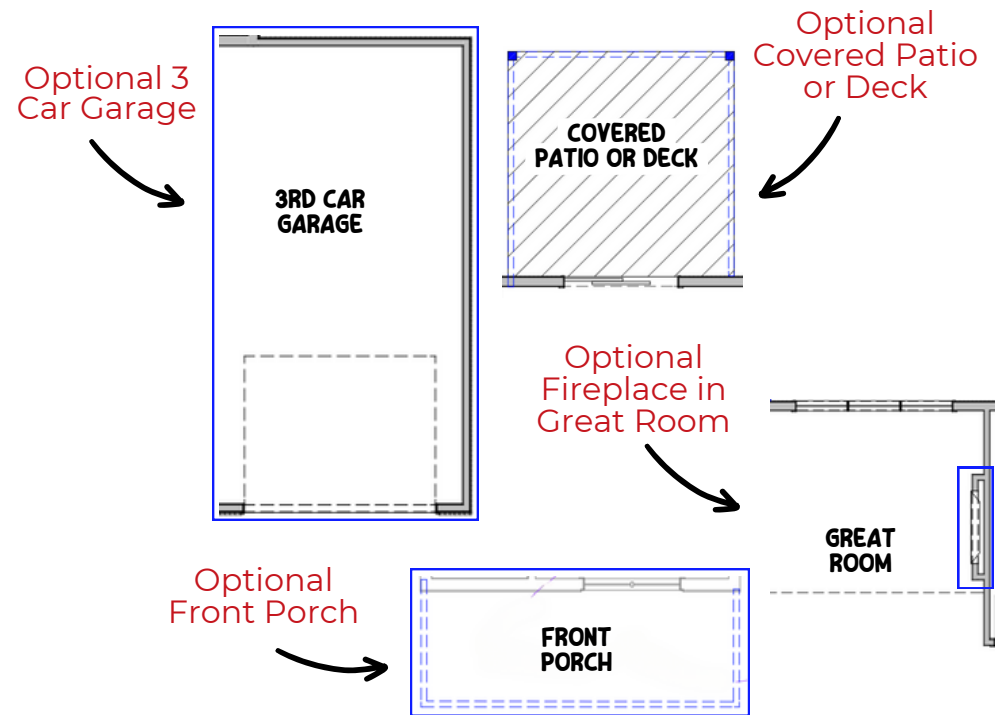


# THI BUILDERS Ericson

THI Builders presents, The Ericson. This well-designed ranch-style plan is sure to top your favorites list! Whether it's the overall size of the main floor or the open-concept flow, The Ericson has everything you'd want in a ranch plan! A huge great room, dining area, and kitchen all flow together and come with LVP flooring! The kitchen includes a large island w/ 12" overhang, walk-in pantry, and all kitchen appliances included! The main floor includes our most popular split-room set up that has two spacious bedrooms "jack-and-jill style" with a full bathroom connecting them, a ½ bath / powder room off of the entrance, and all of this separate from the oversized primary bedroom and primary bathroom ensuite. The primary bedroom bathroom flows into a large walk-in closet and then into the main floor laundry room. From the laundry room you can access the drop-zone area (bench & hooks) off of the entry from the garage. Finish the lower level to include a 4th & 5th bedroom, 4th bathroom, and massive rec room space! All of that, PLUS an insane amount of storage space in the unfinished area. Schedule your tour of The Ericson today!

## Common Upgrades & Floor Plan Additions

- Three-car garage.
- Covered patio or deck (depending on lot style)
- Electric fireplace with mantel & stone & tile options.
- Hood vent.
- Front porch.



See all of our floor plans here!



Build Your Dream House Today!  
402.281.9115